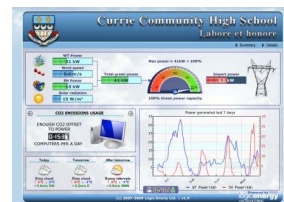
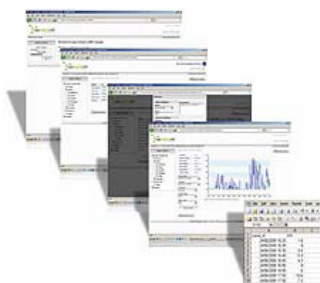


Greetings!

Are you taking full advantage of your wind site's potential?

Logic Energy is a leading provider of Live remote monitoring systems for the renewable energy sector. Here is how we can help.

LeNETmobile & **LeSENSE** live monitoring system provides you with knowledge when you need it.



- Don't wait for the information, have it always with you 24/7 via our web portal **LeSENSE**
- No need to dial-up to retrieve backups, data is always ready for you on **LeSENSE**
- **14 input channels**, compatible with all major brands of anemometers
 - 4 advance anemometer inputs compatible with Vector, Thies, NRG, Second Wind, etc.
 - 2 wind vanes inputs
 - 4 digital counters for rain collection, water, energy, gas
 - 4 analogue inputs 0 to 5Vdc or 4 to 20mA
 - Serial communications to interface with other equipment like Modbus
 - Measure turbulence intensity, wind direction and frequency distribution, run wind report on-line
- Full remote access worldwide to data via **GSM / GPRS**
- **Quick installation, no setup, no software to maintain**
- **Ultra LOW power consumption, can run on Alkaline batteries!**
- Affordable complete Back to Back solution to remote monitor: Wind, Solar, Hydro, Schools

We know sometimes budget is important and for that reason we have a very affordable professional wind data logger that will give you all the important wind data needed for successful wind turbine installations.

LeWL wind data logger



LeWL Wind data logger specifications

- Accessible **professional** system for early wind site assessment
- Compact, autonomous and reliable wind logging system.
- **Connect 2 anemometers and 1 wind vane**
 - **Don't guess wind shear, measure it!**
 - **Find out wind turbulence intensity**
- Serial port to interface with other equipment.
- **Waterproof IP65 rated enclosure**

If you have a question about wind measurement or monitoring any renewable energy project, please contact us:

+44 141 585 6496 or email logic@logicenergy.com

Logic Energy Ltd proudly support local business, all our equipment is **MADE IN UK**